

Co3 Contemporary Dance presents

IN HOUSE

A showcase of independent WA dance makers
curated by Director Raewyn Hill

2–4 September 2021
MIDDAR ROOM
State Theatre Centre of WA

Featuring Choreographers

Sarah Chaffey
May Greenberg
Talitha Maslin
Aimee Smith
Ella-Rose Trew



WELCOME

IN HOUSE STUDIO SEASON

RAEWYN HILL

Artistic Director



As part of our PATHWAYS PROGRAM, I am honoured to curate IN HOUSE, an enlightening showcase of ideas from some of Western Australia's most innovative female choreographers and dance makers. A tasting plate of dance works traversing the challenges we strive to overcome in our increasingly complex lives. This studio contemporary dance season explores ways in which we deal with our environment, confront stigmas, accept destruction, embrace transformation, and seek regeneration.

Our PATHWAYS PROGRAM is a long-standing dream of mine and as it comes to fruition, I can't help but reflect on pivotal moments and opportunities that I had as a young creator. Having chosen the independent career pathway for most of my life, the psychology, commitment and passion of the independent dance maker, is something I understand and intrinsically relate to. That drive, determination and freedom to engage and explore ideas brought forth through movement is a truly exhilarating place to be.

Joining each of the choreographers in the studio over the past month has been awe inspiring. Their works are personal, poignant, and powerful and feature a host of supporting actors and creatives in the fields of dance, dramaturgy and sound composition. My heartfelt congratulations to each of our inaugural makers for their courage, as they boldly step forward sharing their work in perhaps the most vulnerable form, at the very beginnings of their exceptional ideas.

Thanks to the Pathways Advisory Panel: Helen Carroll, Anna Reece, Jeremy Smith, Gavin Webber and Rachael Whitworth. All of us at Co3 hope that we can continue to support, guide and provide as many opportunities as possible to see these works come to life.

CHOREOGRAPHERS

IN ALPHABETICAL ORDER

SARAH CHAFFEY

Performer/ Choreographer



Sarah Chaffey is a performer, teacher, emerging choreographer and researcher. Sarah is passionate about multi-disciplinary collaboration and the development of interdisciplinarity in dance practice. In 2019, she played Antigone in the theatre production *Rubber Girl on the Loose* presented by CAKE and Esplanade in Singapore, and recently completed her Masters by Research at Edith Cowan University (ECU) and WAAPA, titled *Voice in Motion*.

CHROME

Chrome is a potent experimental performance work merging the art of pole and contemporary dance with evocative theatre. It is a tribute to the women of the vertical; providing insight into pole dancing and the humans who climb for sport, work and pleasure.

This artform is reclaiming its identity by offering women the possibility to build physical strength, creative expression, gain a sense of empowerment and bodily autonomy. These benefits are not widely acknowledged, with many still bound to the dance form's imprinted aesthetics of objectification and power dynamics of heteronormative sexuality.

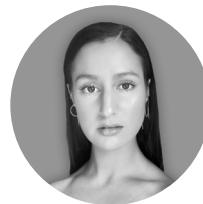
Dramaturg – Daley Rangji

Music: 'Give It' by Betta Lemme; 'Get Sun' by Hiatus Kaiyote; 'Now' and 'Still' by Sophia Hansen-Knarhoi

CONTENT WARNING: *Partial nudity, strong language, mature themes (discrimination/ spoken reference to sexual assault).*

MAY GREENBERG

Performer/ Choreographer



May Greenberg is a Perth based, independent dancer who graduated WAAPA in 2014 with a BA in Dance. She has worked with various independent Perth based choreographers and artists including Kynan Hughes, Mitchell Harvey and Brooke Leeder, as well as choreographing her own solo works in *Tried*, *In My Way* (2018), *Oy Vey* (2021) as well as ensemble works *The Herd* (2020) and *Seek Destruction* (2021). May is motivated by her curiosity to layer new information into her physicality and her creative practice.

THE INTERFACE

Destruction, empowerment, humility, and pride of identity. Why do we wish to stay connected by holding onto small remaining elements of tradition? Why do we cling onto heritage in order to identify ourselves? How are our misunderstood histories enhanced when exposed to foreign surroundings?

Composer & Sound Designer – Azariah Felton

TALITHA MASLIN

Choreographer



Talitha Maslin is a performer, teacher and choreographer who works within the interdisciplinary practice of dance, film, visual design and sound. Through collaboration she seeks to produce performances that push the borders between

performance art, dance and physical theatre. Talitha has balanced her career with community engagement work, living in remote regions and working with diverse groups to provide high-quality dance education and performance opportunities to people with limited access.

WASTELAND

Wasteland is a journey to the forest floor, under the canopy, where richly diverse flora and fauna thrive. As the canopy falls, the water dries up and the undergrowth is slowly turning to dust.

Performers – Nathan Turtur, Brent Rollins, Isabel Wartmann, Sarah Chaffey

Special thanks – John Carberry

Music: 'The Last Dive of David Shaw' by We Lost The Sea, and various tracks by Selfless Orchestra.

AIMEE SMITH

Choreographer



Aimee Smith is an award-winning choreographer and dance artist, working at the intersection of arts and sustainability for over 15 years. A graduate of WAAPA, Aimee has achieved a celebrated career in Western Australia,

producing a series of critically acclaimed independent dance productions. Aimee completed a Masters in Sustainability and Climate Policy investigating the intersections of arts and sustainability and was awarded the British Council's prestigious 'Realise Your Dream' award for her leadership in this area.

ONCE EVERYTHING BURNS TO THE GROUND

Fire as metaphor - for the internal human landscape, and the external.

Fire as a symbol of the current state of climate and crisis.

Fire as fiercely destructive, whilst simultaneously creative and life-giving.

The female performance of this energy.

The aftermath and what comes next.

What emerges once everything is burnt to the ground?

Performers – Laura Boynes, Ella-Rose Trew

Music: 'Exit!', Pt. 1' by Fire! Orchestra

ELLA-ROSE TREW

Choreographer



Ella-Rose Trew has spent over a decade as a dancer, educator and dance-maker. A graduate of WAAPA and LINK Dance Company, she has worked with Buzz Dance Theatre, independently around Perth.

STEPS Youth Dance Company and is a founding member of Co3 Contemporary Dance. She has worked extensively across the independent dance sector and in 2018 was awarded Best Female Performer (Dance) at the Performing Arts WA Awards. Ella-Rose continues to lecture within the dance department at WAAPA and teach.

FOR FOUR

Slippages, moments lost in time and gathered in others. Again and again.

The words disappeared, cotton wool in the mouth.

The landslide, the wild ride. The tug of the skin.

The light has shifted.

Hung and hung again, row by row, line by line, patiently waiting.

A moment of recognition. Flushed, dewy, untouched.

The light has shifted.

Provocateurs/ Collaborators – Reyes de Lara, Raewyn Hill, Paea Leach

For more detailed biographical information on IN HOUSE choreographers visit co3.org.au

SPECIAL THANKS

CO3 IN HOUSE TEAM

Artistic Associate

Alice Kell

Stage Manager

Liam Murray

Production Assistant

Scott Galbraith

PATHWAYS ADVISORY PANEL

Manager, Wesfarmers Arts & Co3 Board Director

Helen Carroll

Director, Fremantle Arts Centre

Anna Reece

Senior Producer, Performing Lines WA

Jeremy Smith

Co-Director, THE FARM

Gavin Webber

Head of Programming, Perth Festival

Rachael Whitworth

DISCLAIMER: Program is correct at time of print but may be subject to change.

ABOUT CO3 (Pron. Koh-three)

Co3 Contemporary Dance is driven by excellence and collaboration and in our short six-year history have emerged as the State's contemporary dance company. We are a progressive platform for the exchange of ideas and stories that reflect the experiences of our WA community. With a multidisciplinary and technological focus, we present an annual program of works with unique physicality and expression. Through the programming of Artistic Director, Raewyn Hill, we seek to empower and inspire; developing future audiences and the next generation of artists.

Resident dance company at the State Theatre Centre of WA on the land of the Whadjuk Nyoongar people.

BOARD & EXECUTIVE

Patron

Michael Smith

Chair

Margrete Helgeby Chaney

Deputy Chair

David Griffiths

Secretary

Peter Metcalfe

Treasurer

Rob Bentley

Directors

Alecia Benzie

Helen Carroll

Pamela-Jayne Kinder

Scott King

Co-CEO & Artistic Director

Raewyn Hill

Co-CEO & Executive Director

Alana Culverhouse

STAFF

Business Manager

Jaz Cappeau-Seeber

Stakeholder Relations Coordinator

Rebecca Collings

Administrator

Nic Ramsay

Artistic Associate

Alice Kell

Youth & Engagement Associate

Jessica Lewis

Project Coordinator

Claudia Alessi

Tour Coordinator

Jessica Knight

Marketing Manager

Maria Sioulas

Content Coordinator & Videographer

Jessica Russell

Digital Marketing Coordinator

Simin Soyer

STATE THEATRE CENTRE OF WA

State Theatre Centre of Western Australia is managed by the Perth Theatre Trust.

Manager, State Theatre Centre of WA

Alice Jorgensen

Chairman, Perth Theatre Trust

Morgan Solomon

General Manager, Perth Theatre Trust

Lanie Chopping



co3.org.au

#kohthree #movewithus

Cover photo: Simin Soyer

PRINCIPAL PARTNER



GOVERNMENT PARTNER



HOSPITALITY PARTNERS



ALEX HOTEL